

Video Intelligence For Smart Health

Affordable edge AI

Most of the countries and some of the cities around the world have started enforcing wearing face mask and social distancing in public. Artificial Intelligence (AI) based technology can play a vital role to enforce these rules and help in flattening the curve.

edgetensor provides state-of-the-art AI technology on low power edge devices that can detect people wearing mask, measure temperature and monitor social distancing

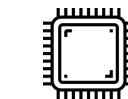


Advantages

- Plug and play setup
- Integrates into existing hardware, and camera infrastructure
- Configurable real-time events and alerts
- High accuracy & low latency
- No cloud data transfer/processing
- Privacy preserving technology
- Works with color/IR/thermal cameras

Use-cases

- Airports
- Healthcare facilities
- Supermarkets
- Public transits
- Apartments and offices
- Educational institutions
- State and Country borders
- Restaurants



Intel/ARM CPU



Color/IR/Thermal



Optional
Dashboard

Request a demo today!

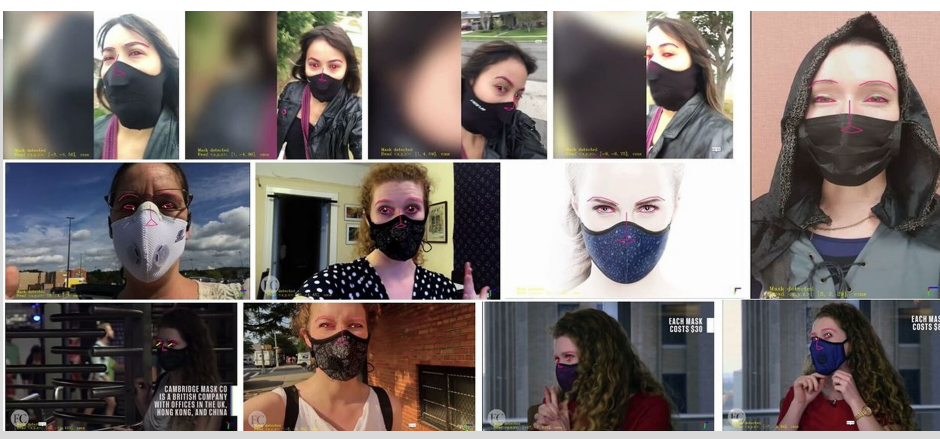
www.edgetensor.com | contact@edgetensor.com | US: +1 (469)590-8565 | INDIA: +91-7348863830

Video Intelligence For Smart Health

Affordable edge AI

Face mask detection in wild

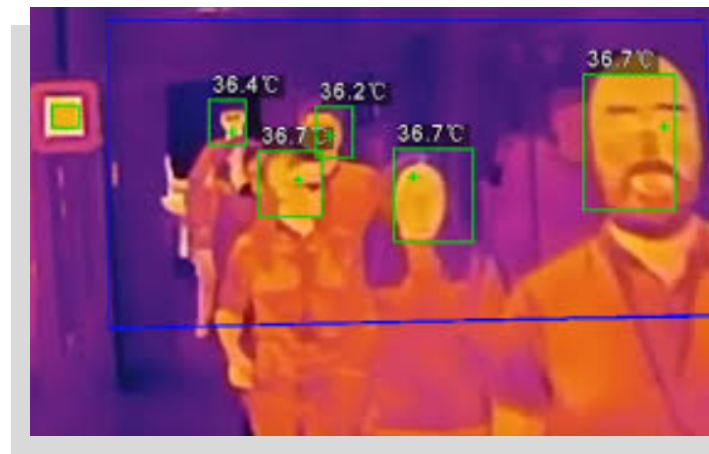
- Accurately detects people who are not wearing mask in real-time
- Detects mask up to 10 meters
- Works with most head poses
- Works with variety of mask types
- Integrates into existing hardware and camera infrastructure



Watch a quick demo video
<https://youtu.be/vx4llwKHOr0>

Real-time temperature sensing

- Provides accurate body temperature in real-time using a thermal camera
- Works with multiple people
- No real images are captured, nor stored nor shown so protects people's privacy
- Integrates into existing hardware and camera infrastructure



Request a demo today!

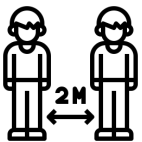
www.edgetensor.com | contact@edgetensor.com | US: +1 (469)590-8565 | INDIA: +91-7348863830

Video Intelligence For Smart Health

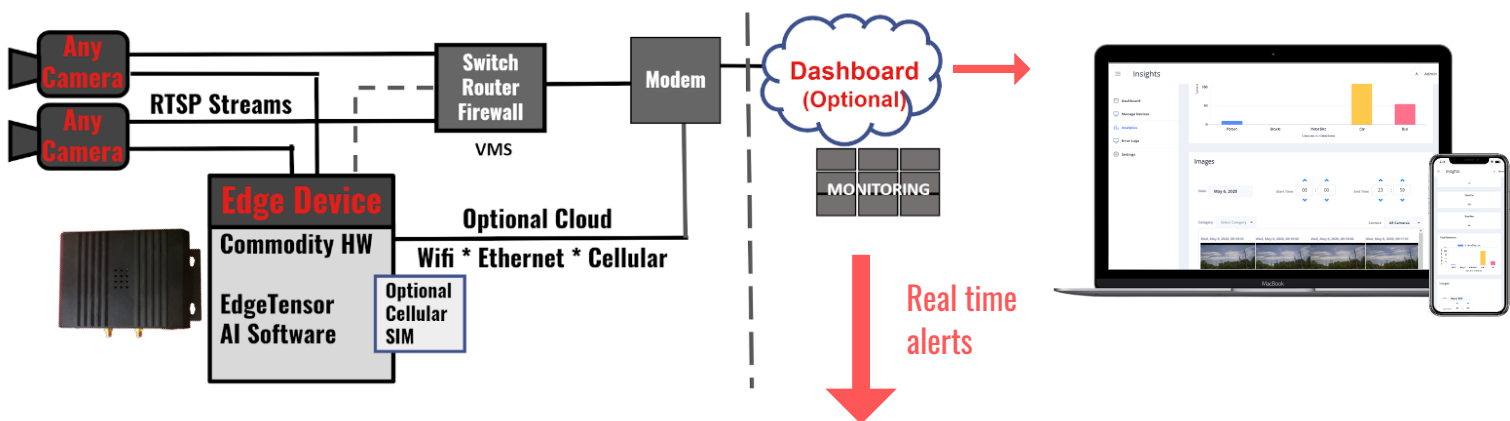
Affordable edge AI

Social Distancing AI app

- No camera calibration is needed and works on commodity 2D image sensors
- No real images are captured to protect people's privacy
- Works in real-time on any fixed or mobile camera
- Analyzes not only the distance between people
- Monitors social interactions, such as their body pose and orientation
- Better accuracy than location-based technology since it can detect if two people are (not) facing each other



Edge configuration



VMS Support



Request a demo today!

www.edgetensor.com | contact@edgetensor.com | US: +1 (469)590-8565 | INDIA: +91-7348863830

Video Intelligence For Smart Health

Affordable edge AI



Edge device specifications

Compute	ARM CPU + GPU
OS	Linux
Memory	4 GB 64-bit LPDDR4 (25.6 GB/s)
General I/O	4 x USB 3.0, USB 2.0
Video I/O	HDMI/DisplayPort
Input IP Stream	RTSP (upto 8 streams)
Ethernet	10/100/1000 BASE-T
Power	7.5W

Cloud vs Edge video analytics

PLATFORM	CLOUD	EDGE
Data Latency	High	Low
Real-Time Alerts	No	Yes
Privacy	No	Yes
Server Storage Cost	High	Low
Processing Cost	High	Low
Monthly Cost to User	High	Low

- ✓ 6X cheaper on the edge
- ✓ Runs on commodity hardware
- ✓ 1000X cost effective compared to Cloud

About Company:

edgetensor is a Texas based startup and its mission is to make edge-based AI affordable and accessible to the mass market. Our proprietary and hardware agnostic Neural Inference Engine powers our AI applications that run on various architectures such as ARM and Intel and is cross platform (Windows, Android, Linux etc) as well. Along with our algorithm innovations we are able to offer accurate, fast and efficient AI solutions at a substantial reduction in cost. Currently, edgetensor provides solutions for driver and in-cabin monitoring and in-vehicle smart content management, retail analytics and video security.

Request a demo today!

www.edgetensor.com | contact@edgetensor.com | US: +1 (469)590-8565 | INDIA: +91-7348863830